
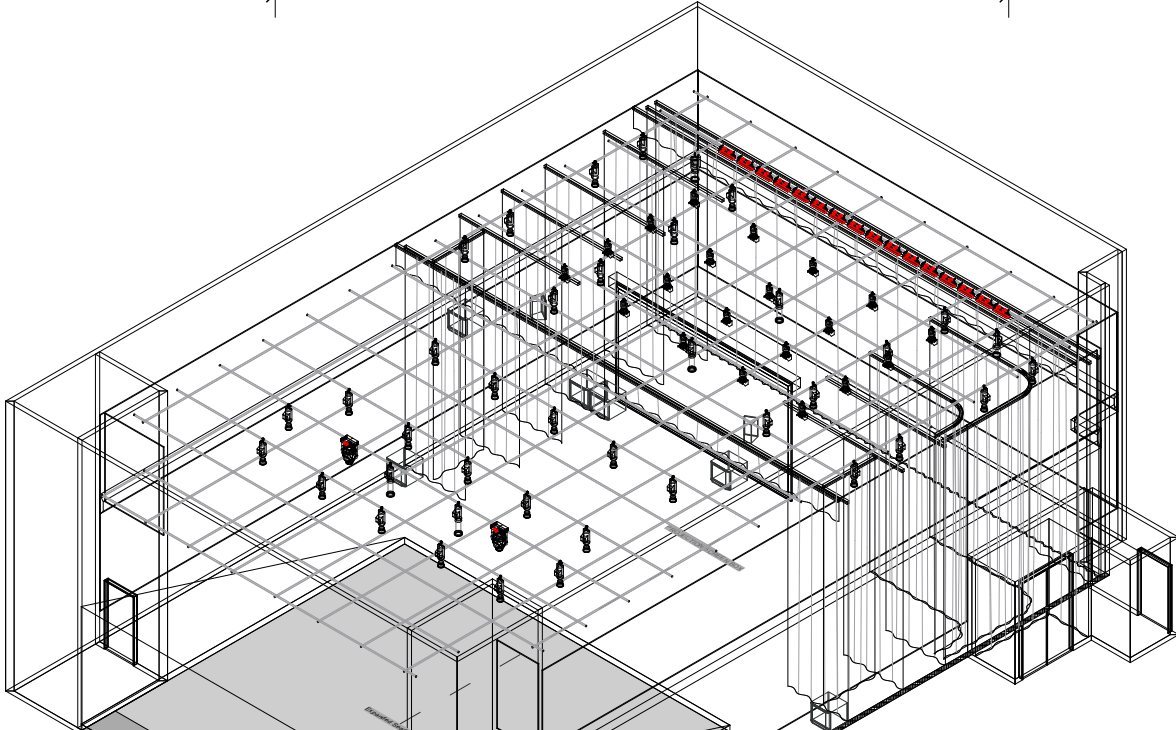
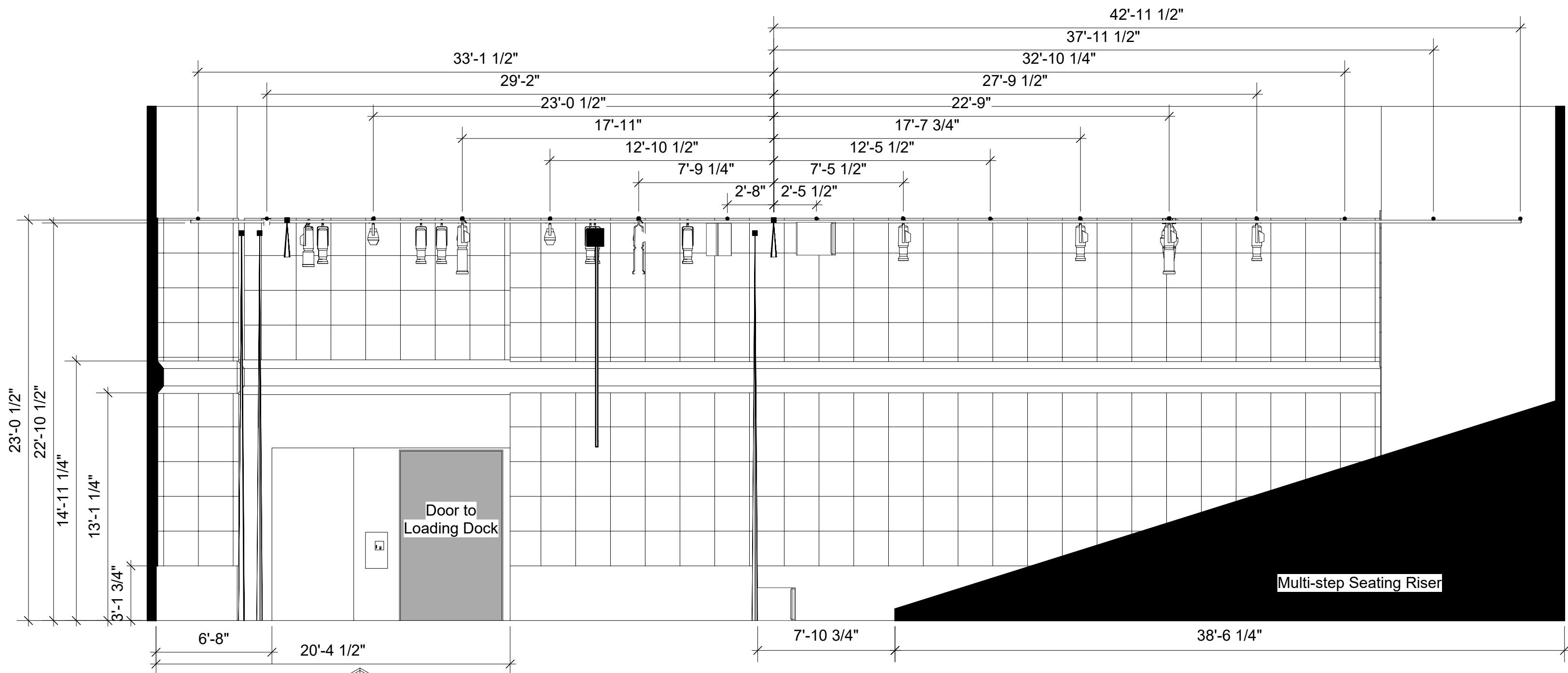


General Notes


1. Double door to loading dock is the smallest part of the loading dock path @ 9'9" tall x 5'6" wide
2. Rolling overhead loading door is approximately 50' straight path from stage
3. Ground level loading dock does NOT have cargo lift or bay to unload 53' truck
4. Doors to lobby are standard height doors at 7'-0" H x 3'-4" W
5. Height of grid is 22'-10 1/2" on lettered pipes and 23'-0 1/2" on FOH and LX pipes
6. Collapsing the seating risers requires prior approval as an operations team must be used
7. Full width of room is 52'-2 1/2", however there is an air return that sticks out from wall 5" on all sides at 13' to 15' decreasing width to 51' 4 1/2"
8. Legs are 7'-0"W even though curtain tracks are 14'-0" long

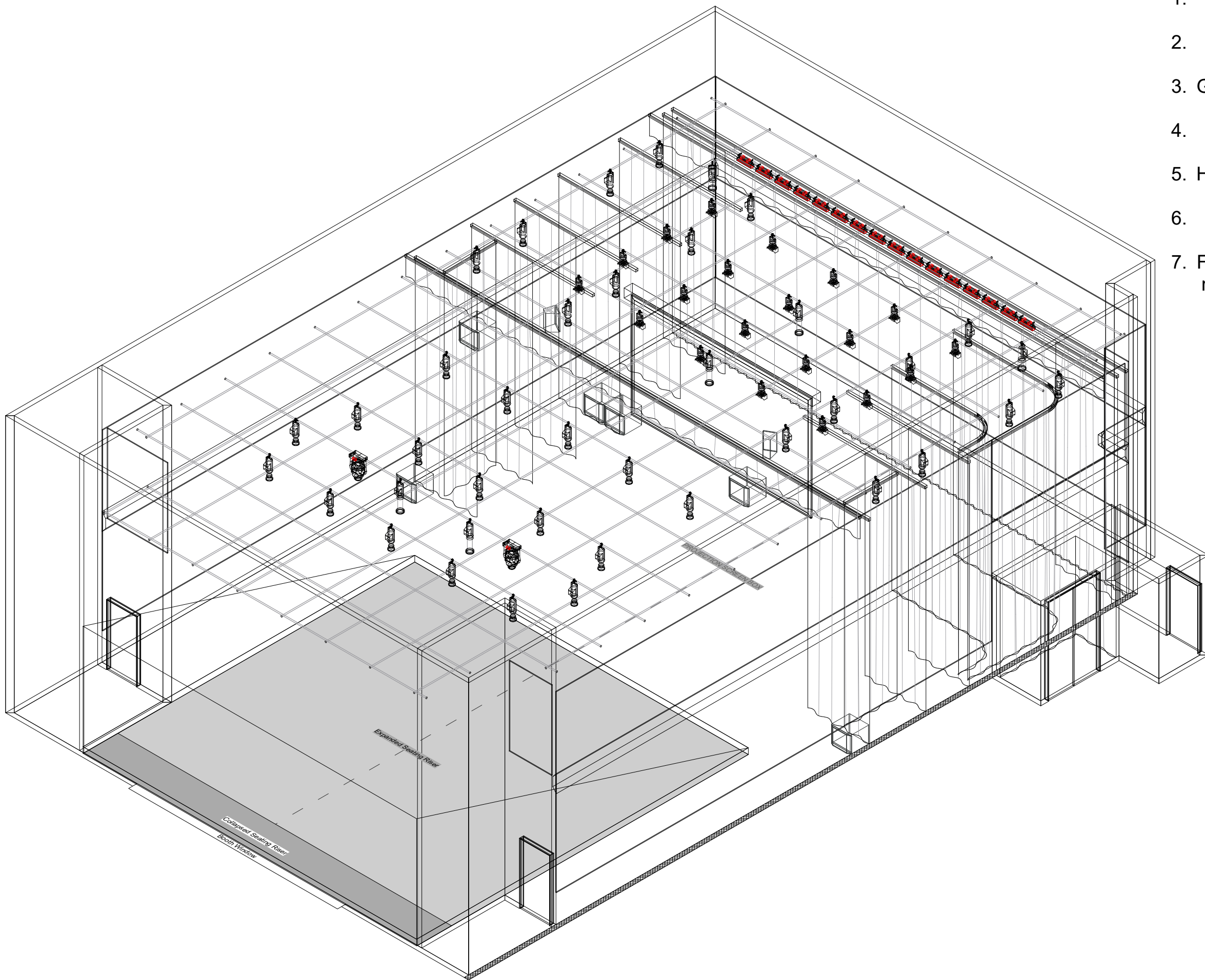
Production Title		Brookfield Residential YMCA At Seton Evan Hazel Theatre	
Drawing Title		Theatre Groundplan With Drapes And Measurements	
Lighting Designer	Gaslamp FX INC	Director	
Drawn By	Graeme Janzen	Scale	1/8:1'-0"
Venue	Evan Hazel Theatre		
Date	1/3/2026		
CAD File Name	Evan Hazel 2026.VWX		



General Notes


1. Double door to loading dock is the smallest part of the loading dock path @ 9'9" tall x 5'6" wide
2. Rolling overhead loading door is approximately 50' straight path from stage
3. Ground level loading dock does NOT have cargo lift or bay to unload 53' truck
4. Doors to lobby are standard height doors at 7'-0" H x 3'-4" W
5. Height of grid is 22'-10 1/2" on lettered pipes and 23'-0 1/2" on FOH and LX pipes
6. Collapsing the seating risers requires prior approval as an operations team must be used
7. Full width of room is 52'-2 1/2", however there is an air return that sticks out from wall 5" on all sides at 13' to 15' decreasing width to 51' 4 1/2"

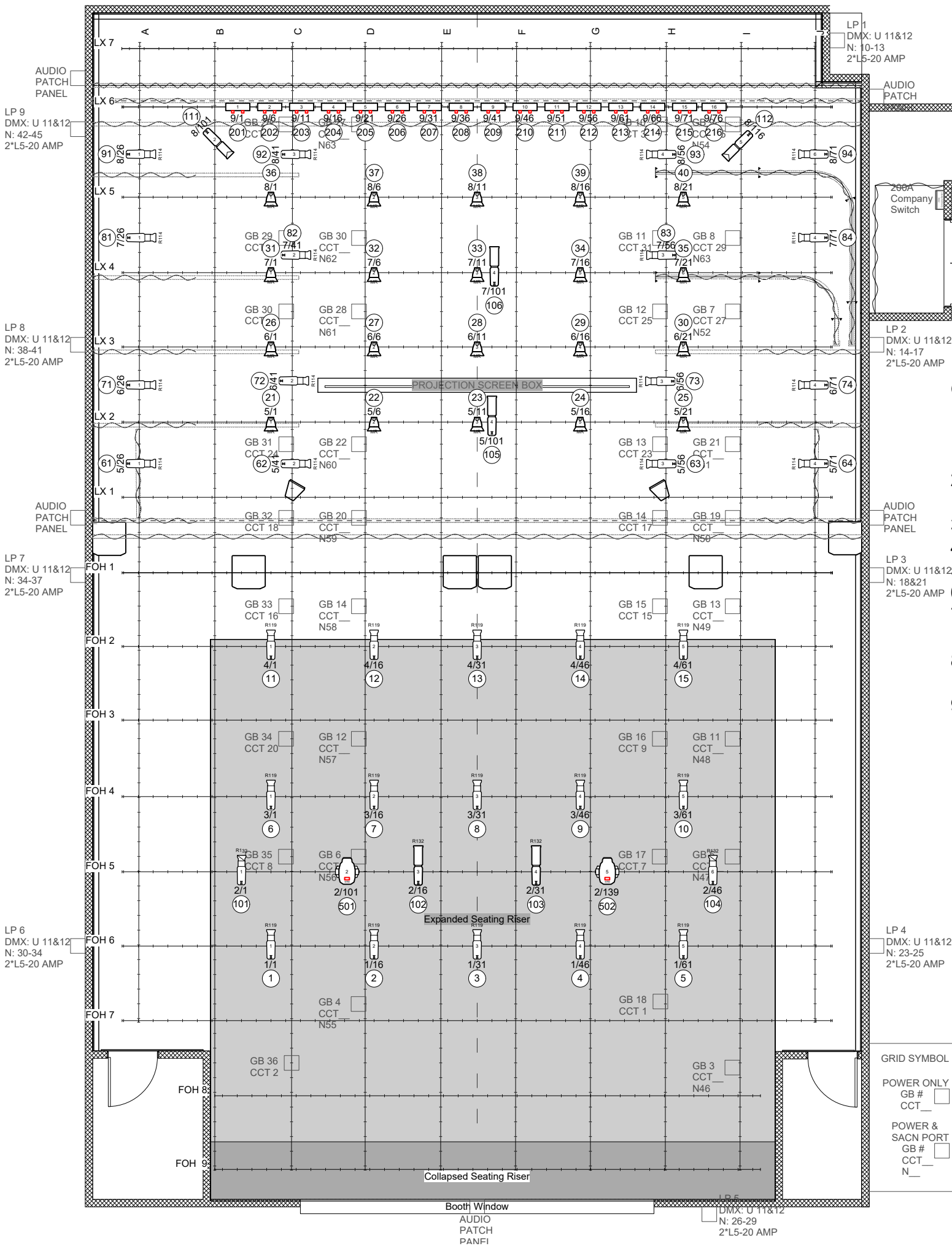
Production Title		Brookfield Residential YMCA At Seton Evan Hazel Theatre	
Drawing Title		Section View No Legs	
Lighting Designer	Gaslamp FX INC	Director	
Drawn By	Graeme Janzen	Scale	3/16" : 1'-0"
Venue	Evan Hazel Theatre		
Date	1/3/2026		
CAD File Name	Evan Hazel 2026.VWX		



General Notes

1. Double door to loading dock is the smallest part of the loading dock path @ 9'9" tall x 5'6" wide
2. Rolling overhead loading door is approximately 50' straight path from stage
3. Ground level loading dock does NOT have cargo lift or bay to unload 53' truck
4. Doors to lobby are standard height doors at 7'-0" H x 3'-4" W
5. Height of grid is 22'-10 1/2" on lettered pipes and 23'-0 1/2" on FOH and LX pipes
6. Collapsing the seating risers requires prior approval as an operations team must be used
7. Full width of room is 52'-2 1/2", however there is an air return that sticks out from wall 5" on all sides at 13' to 15' decreasing width to 51' 4 1/2"

Production Title		Brookfield Residential YMCA At Seton Evan Hazel Theatre	
Drawing Title		Isometric View	
Lighting Designer	Gaslamp FX INC	Director	
Drawn By	Graeme Janzen	Scale	1/8" : 1'-0"
Venue	Evan Hazel Theatre		
Date	1/3/2026		
CAD File Name	Evan Hazel 2026.VWX		



General Notes

1. Additional inventory consists of
1 x 15-30 Lustr 2 Zoom,
15 Colorsourc Par Deep Blue
2. Height of grid is 22'-10 1/2" on lettered pipes
and 23'-0 1/2" on FOH and LX pipes
3. Front of house wash has R119 frost installed
4. High sides/Tips have R114 frost installed
5. Top Pars have MR lenses installed
6. Colorsourc Linears have WL - H lenses installed
7. Channels 101 through 112 can be refocused per client
needs
8. Channel 111 and 112 have Rosco Medium Leaf Breakup
gobo installed
9. All lights focused for client needs must be restored prior to
client departure
10. Overhead DMX is supplied by local single port nodes on
each LX pipe
11. Overhead DMX is universes 1-9, Houselights are universe
10 and Relay control is universe 101
12. Water based hazers may be allowed pending prior approval
and sign off
13. 200 Amp Cam-loc disconnect available

GRID SYMBOL KEY	WALL SYMBOL KEY
POWER ONLY GB # <input type="checkbox"/> CCT_ <input type="checkbox"/>	LX Panel Number <input type="checkbox"/> 2 * 5 Pin DMX Node <input type="checkbox"/> 2*CAT 5 <input type="checkbox"/> 2*L5-20 AMP Twist
POWER & SACN PORT GB # <input type="checkbox"/> CCT_ <input type="checkbox"/> N_ <input type="checkbox"/>	AUDIO PATCH PANEL <input type="checkbox"/>

Symbol Key

	ETC Source4 LED2LS 36deg 23.40 lb	31
	Light Instr ETC Source 4 LED2LS 26deg	2
	ETC Source4 LED2DS 15deg-30deg Zoom 29.00 lb	4
	ETC Source4 LED2DS 25deg-50deg Zoom 27.00 lb	2
	7.5in 4 Leaf Barn Door	20
	ETC ColorSource PAR Round 8.30 lb	20
	ETC ColorSource Linear 16 6.40 lb	16
	Martin MAC Encore Performance WRM	2

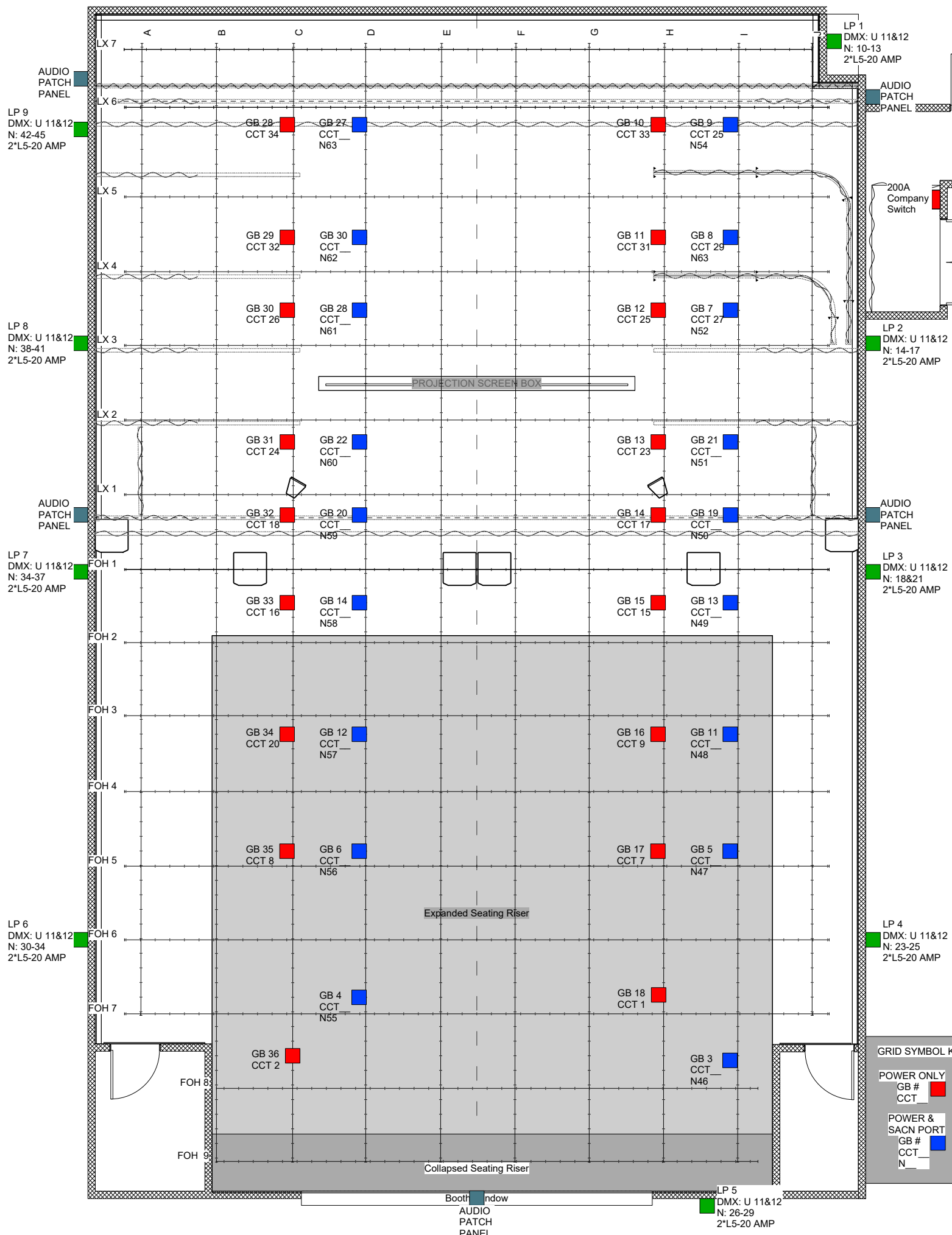
Color

 Unit Number
 Universe/Address

 Channel

Production Title		Brookfield Residential YMCA At Seton Evan Hazel Theatre	
Drawing Title		Lighting Plot With Drapes And Seating	
Lighting Designer	Director		
Graeme Janzen		Scale	1/8:1'-0"
Drawn By			
Gaslamp FX INC			
Venue	Evan Hazel Theatre		
Date	1/3/2026		
CAD File Name	Evan Hazel 2026.VWX		





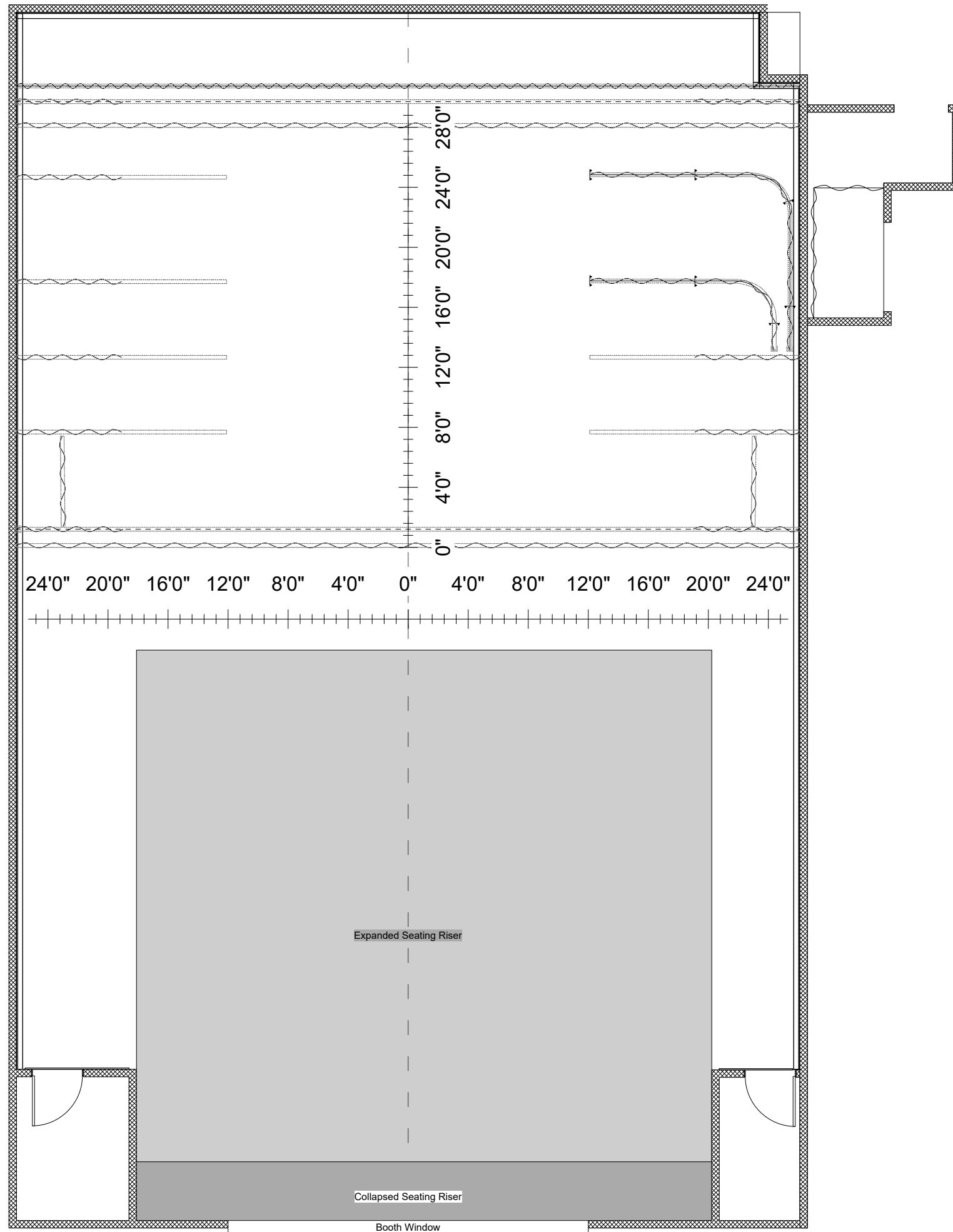
General Notes


1. Height of grid is 22'-10 1/2" on lettered pipes and 23'-0 1/2" on FOH and LX pipes
2. All lights focused for client needs must be restored prior to client departure
3. Overhead DMX is supplied by local single port nodes on each LX pipe
4. Overhead DMX is universes 1-9, Houselights is universe 10 and Relay control is universe 101
5. CCTs as part of overhead are DMX controlled relays, CCTs on LP panel are always on with no control
6. As of document creation, not all CCT numbers are known in overhead, it is also not known if LP L5-20 outlets are doubled or unique per panel
7. 200 Amp Cam-loc disconnect available

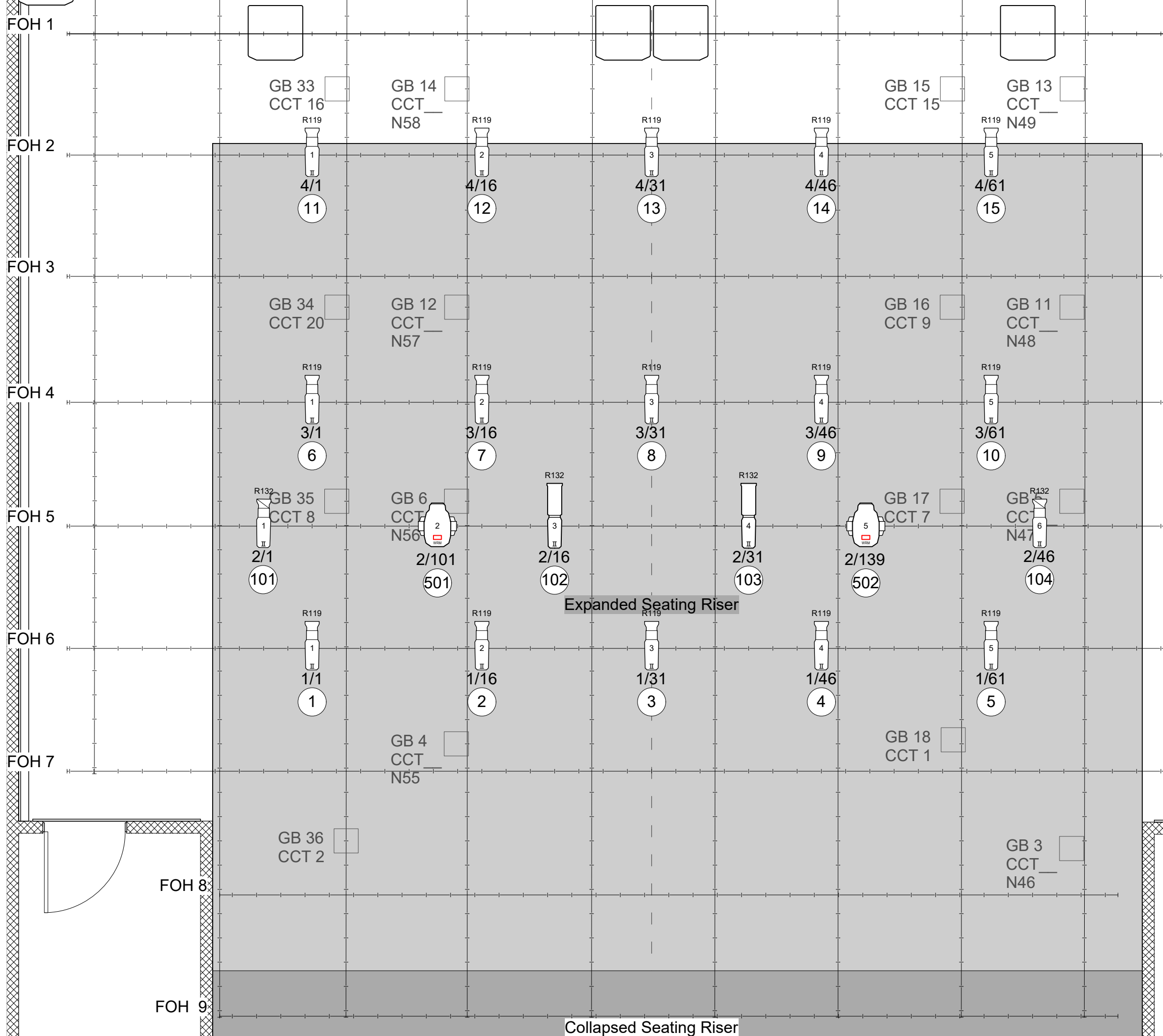
GRID SYMBOL KEY	WALL SYMBOL KEY
POWER ONLY GB # [Red Square] CCT [Red Square]	LX Panel Number [Green Square] 2 * 5 Pin DMX Node [Green Square] 2*CAT 5 [Green Square] 2*L5-20 AMP Twist
POWER & SACN PORT GB # [Blue Square] CCT [Blue Square] N [Blue Square]	AUDIO PATCH PANEL [Blue Square]

Production Title Brookfield Residential YMCA At Seton Evan Hazel Theatre	
Drawing Title Lighting Control Points and Circuit Layout with Drapes	
Lighting Designer Graeme Janzen	Director
Drawn By Gaslamp FX INC	Scale 1/8:1'-0"
Venue Evan Hazel Theatre	
Date 1/3/2026	
CAD File Name Evan Hazel 2026.VWX	





Production Title		Brookfield Residential YMCA At Seton Evan Hazel Theatre	
Drawing Title		Groundplan with Ruler	
Lighting Designer	Director		
Gaslamp FX INC			
Drawn By	Scale		
Graeme Janzen			1/8:1'-0"
Venue			
Evan Hazel Theatre			
Date			
1/3/2026			
CAD File Name	Evan Hazel 2026.VWX		

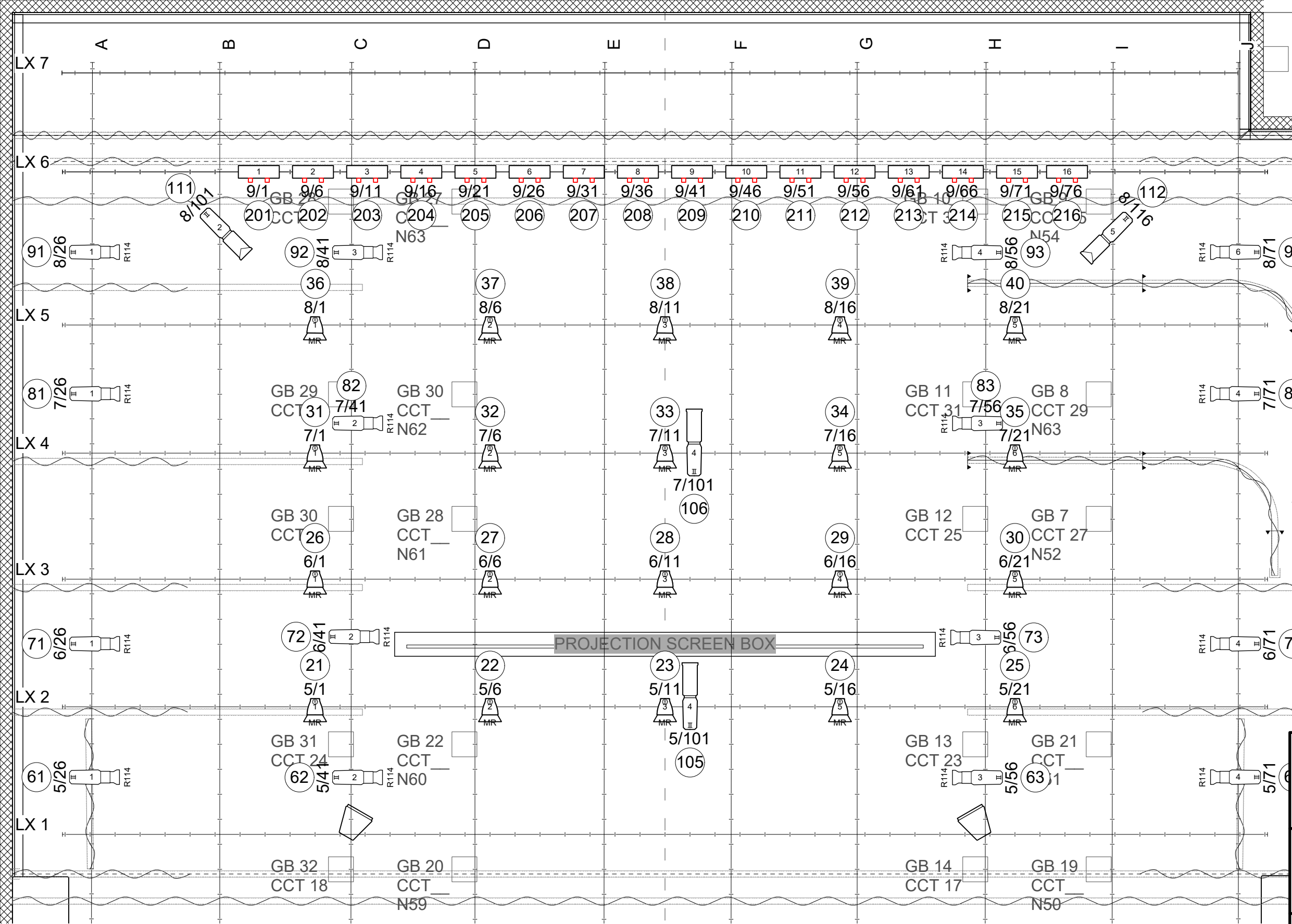


Symbol Key

	ETC Source4 LED2LS 36deg 23.40 lb	31 / 0
	Light Instr ETC Source 4 LED2LS 26deg	2 / 0
	ETC Source4 LED2DS 15deg-30deg Zoom 29.00 lb	4 / 0
	ETC Source4 LED2DS 25deg-50deg Zoom 27.00 lb	2 / 0
	ETC ColorSource PAR Round 8.30 lb	20 / 0
	ETC ColorSource Linear 1 6.40 lb	16 / 0
	Martin MAC Encore Performance WRM	2 / 0

Color
Unit Number
Universe/Address
Channel

Production Title		Brookfield Residential YMCA At Seton Evan Hazel Theatre	
Drawing Title		Lighting Plot FOH Isolated View	
Lighting Designer	Gaslamp FX INC	Director	
Drawn By	Graeme Janzen	Scale	1/4" : 1'-0"
Venue	Evan Hazel Theatre		
Date	1/3/2026		
CAD File Name	Evan Hazel 2026.VWX		

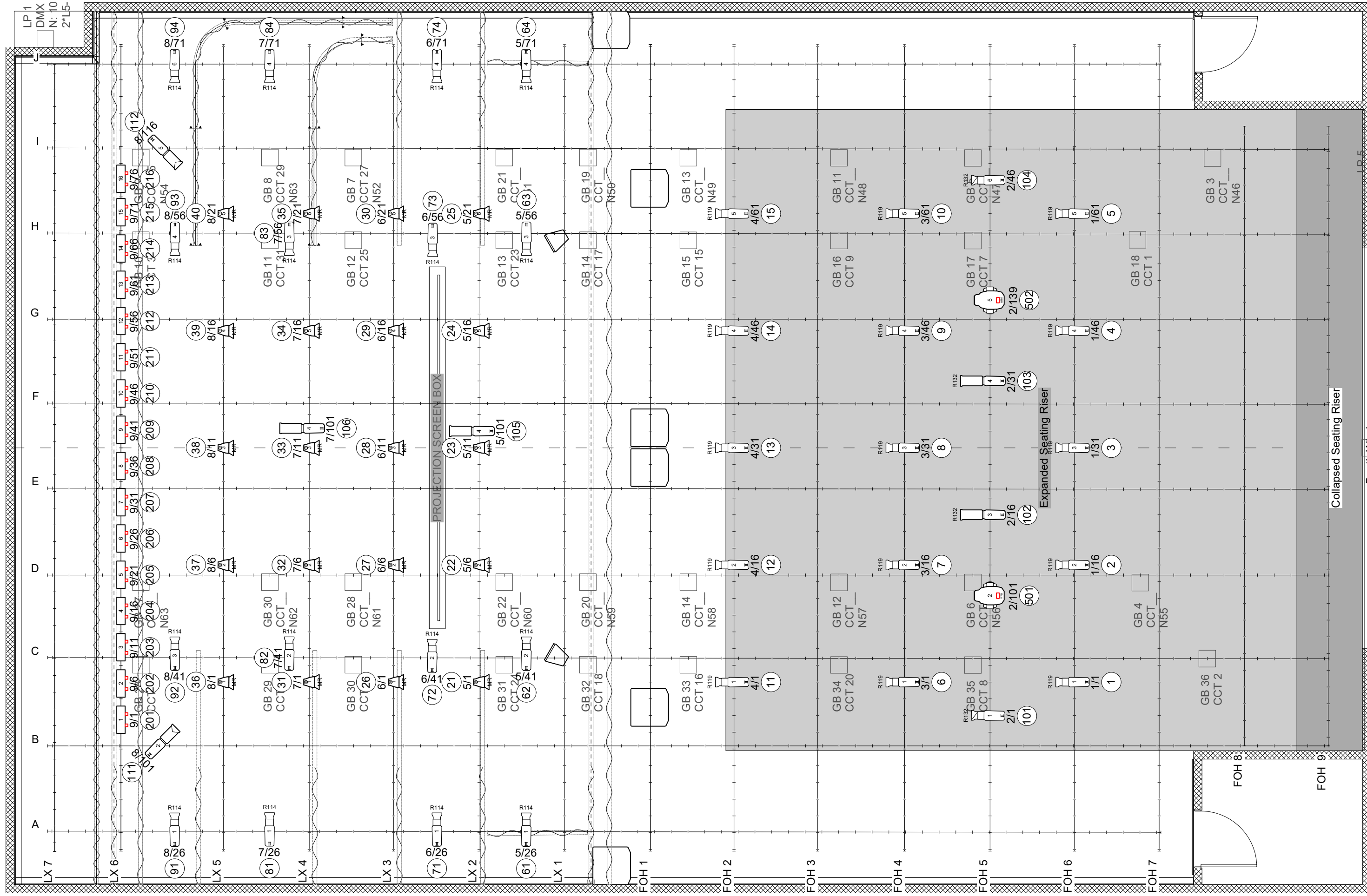


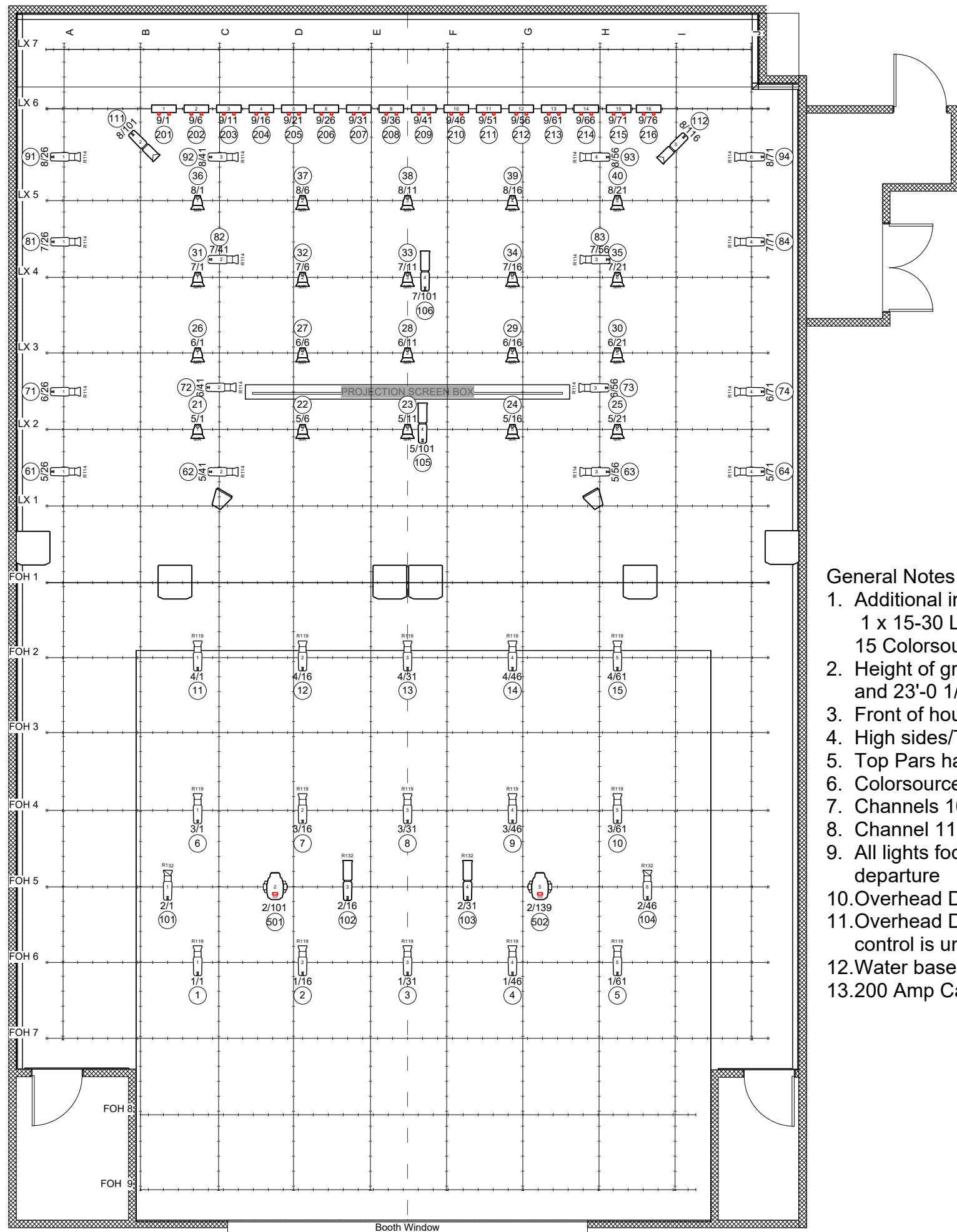
Symbol Key

	ETC Source4 LED2LS 36deg 23.40 lb	31 / 0
	Light Instr ETC Source 4 LED2LS 26deg	2 / 0
	ETC Source4 LED2DS 15deg-30deg Zoom 29.00 lb	4 / 0
	ETC Source4 LED2DS 25deg-50deg Zoom 27.00 lb	2 / 0
	ETC ColorSource PAR Round 8.30 lb	20 / 0
	ETC ColorSource Linear 1 6.40 lb	16 / 0
	Martin MAC Encore 2 Performance WRM	2 / 0

Color
Unit Number
Universe/Address
Channel

Production Title Brookfield Residential YMCA At Seton Evan Hazel Theatre	
Drawing Title Lighting Plot Overhead Isolated View	
Lighting Designer Gaslamp FX INC	Director
Drawn By Graeme Janzen	Scale 1/4" : 1'-0"
Venue Evan Hazel Theatre	
Date 1/3/2026	
CAD File Name Evan Hazel 2026.VWX	



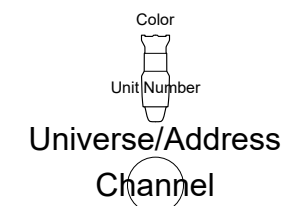


General Notes

1. Additional inventory consists of
1 x 15-30 Lustr 2 Zoom,
15 Colorsourc Par Deep Blue
2. Height of grid is 22'-10 1/2" on lettered pipes
and 23'-0 1/2" on FOH and LX pipes
3. Front of house wash has R119 frost installed
4. High sides/Tips have R114 frost installed
5. Top Pars have MR lenses installed
6. Colorsourc Linears have WL - H lenses installed
7. Channels 101 through 112 can be refocused per client needs
8. Channel 111 and 112 have Rosco Medium Leaf Breakup gobo installed
9. All lights focused for client needs must be restored prior to client departure
10. Overhead DMX is supplied by local single port nodes on each LX pipe
11. Overhead DMX is universes 1-9, Houselights are universe 10 and Relay control is universe 101
12. Water based hazers may be allowed pending prior approval and sign off
13. 200 Amp Cam-loc disconnect available

Symbol Key

	ETC Source4 LED2LS 36deg 23.40 lb	31 / 0
	Light Instr ETC Source 4 LED2LS 26deg	2 / 0
	ETC Source4 LED2DS 15deg-30deg Zoom 29.00 lb	4 / 0
	ETC Source4 LED2DS 25deg-50deg Zoom 27.00 lb	2 / 0
	7.5in 4 Leaf Barn Door	20 / 0
	ETC ColorSource PAR Round 8.30 lb	20 / 0
	ETC ColorSource Linear 1	16 / 0 6.40 lb
	Martin MAC Encore Performance WRM	2 / 0



Production Title Brookfield Residential YMCA At Seton Evan Hazel Theatre	
Drawing Title Lighting Plot Without Drapes Without Seating	
Lighting Designer Graeme Janzen	Director
Drawn By Gaslamp FX INC	Scale 1/8:1'-0"
Venue Evan Hazel Theatre	
Date 1/3/2026	
CAD File Name Evan Hazel 2026.VWX	

